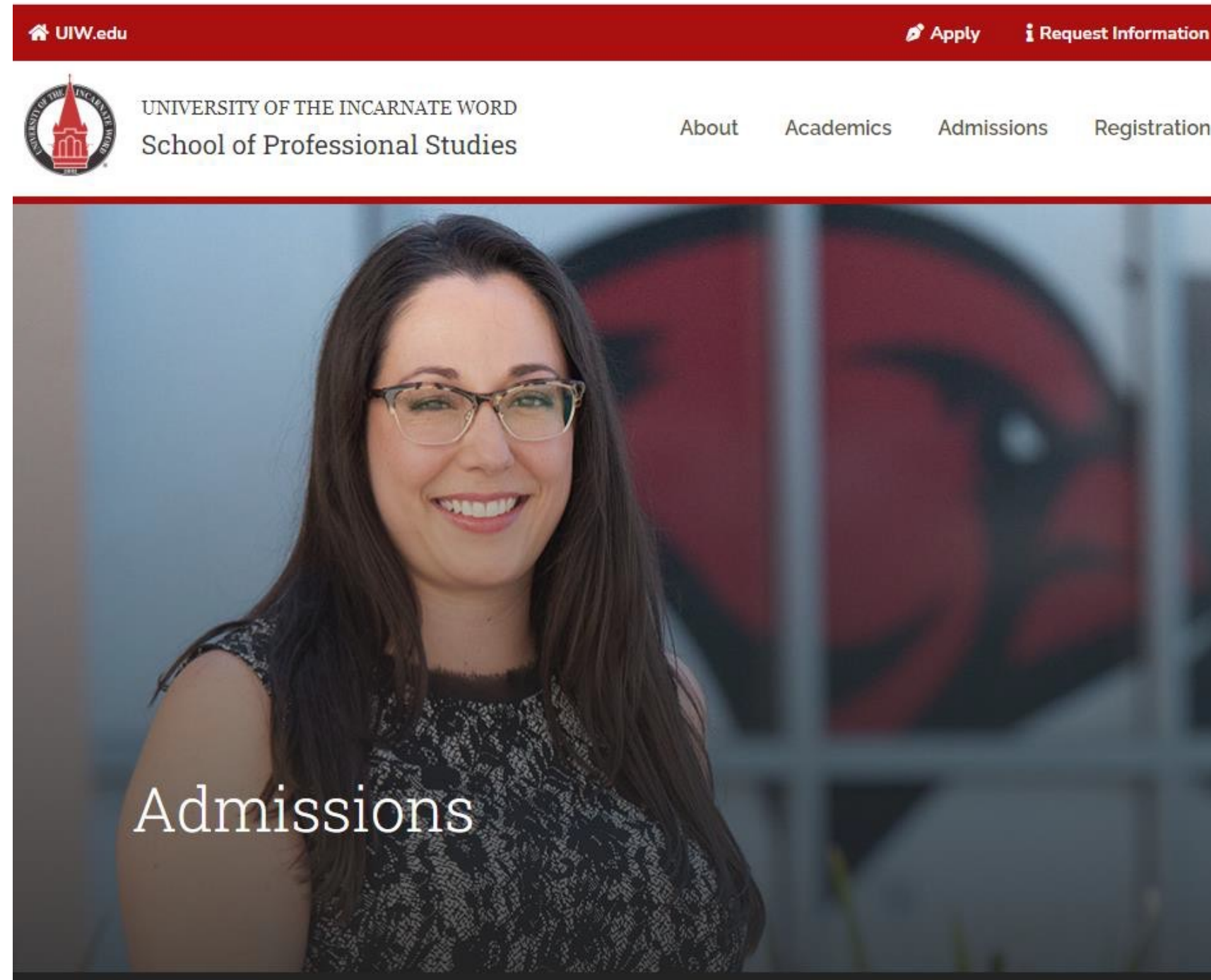




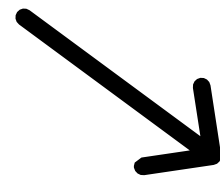
**UNIVERSITY OF THE  
INCARNATE WORD®**

**How to Apply Using the Lone Star College  
Tuition Discount Program**

# Step 1: Go to <https://sps.uiw.edu/admissions>



Step 2: Click on  
"Apply Now"

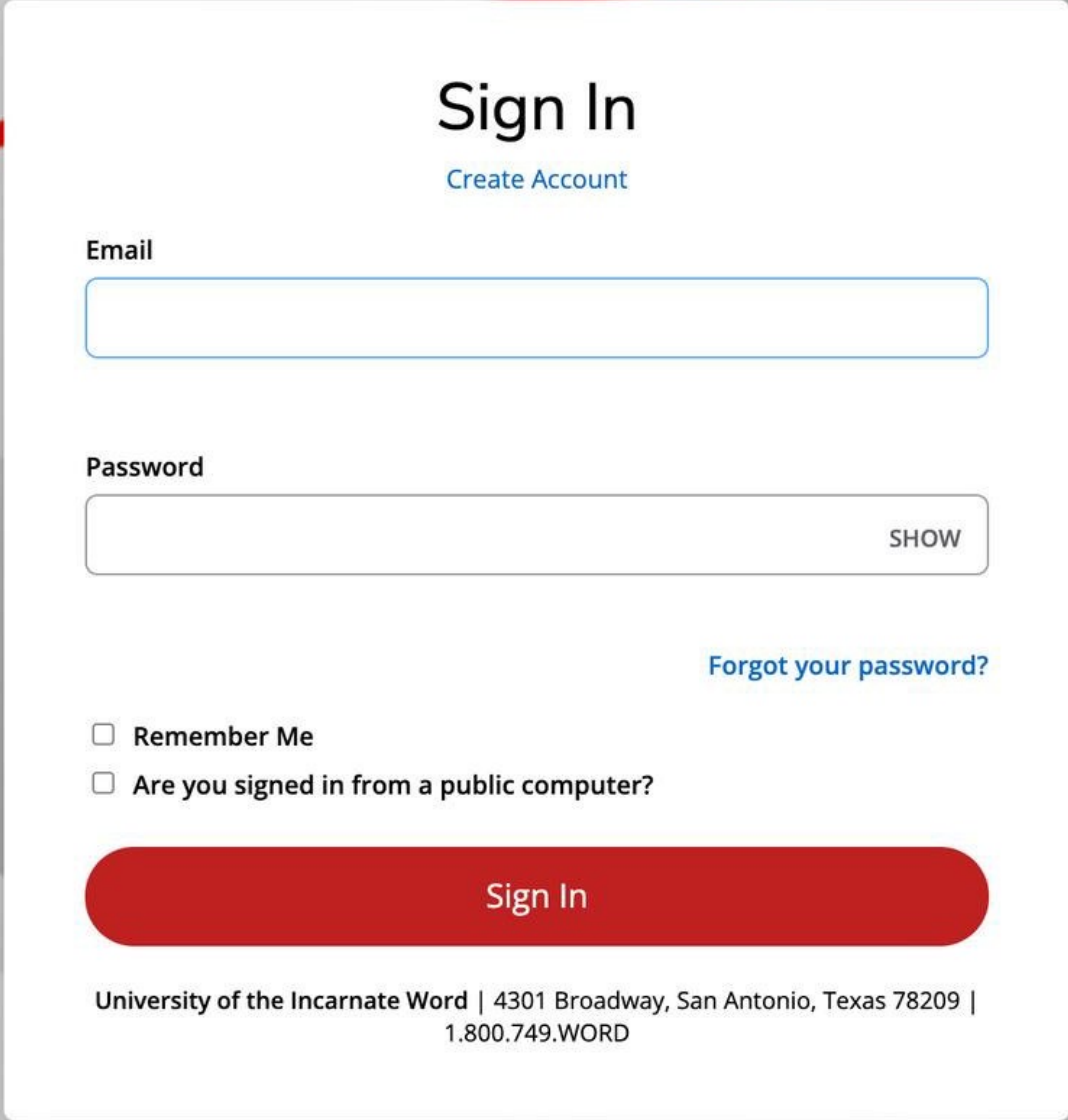


Admissions

Home / Admissions

Apply Now

Shortcut: Go directly to <https://uiw.elluciancrmrecruit.com/ApplyEAP/>



The image shows a 'Sign In' form centered on a grey background with red wavy lines. The form is white and contains the following elements: a title 'Sign In' with a 'Create Account' link below it; an 'Email' input field; a 'Password' input field with a 'SHOW' button; a 'Forgot your password?' link; two checkboxes for 'Remember Me' and 'Are you signed in from a public computer?'; a large red 'Sign In' button; and footer text for the University of the Incarnate Word.

Sign In  
[Create Account](#)

Email

Password  
 SHOW

[Forgot your password?](#)

Remember Me  
 Are you signed in from a public computer?

Sign In

University of the Incarnate Word | 4301 Broadway, San Antonio, Texas 78209 |  
1.800.749.WORD

**Create a GoUIW account, if you don't have one already,  
or sign into your current account.**

# School of Professional Studies

## My Account

Welcome, Camila! The School of Professional Studies at UIW is tailored to the working professional with 8-week terms and classes 100% online or in the classroom. We work with you to create a personalized path to your UIW degree to help you meet your goals in life and your career!

### My Applications

[Create a New Application for the School of Professional Studies](#)

APPLICATION	STATUS	ACTION

### Need Help?

School of Professional Studies Admissions Office

4301 Broadway  
San Antonio, TX 78209

Phone 800-318-1876  
Local Phone 210-757-0202

### Program Spotlight



**Create a new application or complete a started application, if you have already started one.**

# School of Professional Studies

[Personal](#) [Academic Interest](#) [Demographics](#) [Academics](#) [Certification & Signature](#)

Please enter your information in each of the following sections. Fields with a red asterisk (\*) are required and must be completed before you can submit your application. Additional questions may become required based on your answers to a previous question.

## Name

Prefix

First Name \*

Please use legal name.

Middle Name

Last Name \*

Please use legal name.

Former Last Name

Suffix

Gender \*

Birth Date \*

(mm/dd/yyyy)

Shirt Size

Marital Status

**Fill out application information on each tab.**

**On the application, fill out the 'Partnerships & Affiliations' under the 'Academic Interest' tab and select 'Lonestar College Employee' or 'Lonestar College Dependent'.**

The screenshot shows a web application interface with a navigation bar at the top containing tabs: Personal, Academic Interest (selected), Demographics, Academics, and Certification & Signature. Below the navigation bar, there is a red horizontal line. A message states: "Please enter your information in each of the following sections. Fields with a red asterisk (\*) are required and must be complete based on your answers to a previous question." The "Academic Plans" section contains two dropdown menus: "Anticipated Entry Term:" with "Fall 2024" selected, and "Part of Term:". Below these is the "Preferred Learning Format:" dropdown. To the right of the "Preferred Learning Format:" dropdown is the "Partnerships & Affiliations\*" dropdown, which is circled in red. The dropdown menu is open, showing a list of options with "Lonestar College Employee" highlighted in blue.

**Partnership or Affiliation \***

Specify the partner or affiliate associated with this application.

- CCVI Ministry Employee Dependent
- Christus Employee
- Christus Employee Dependent
- City of Dallas Dependent
- City of Dallas Employee
- City of Houston Dependent
- City of Houston Employee
- Coopersmith Career Consulting
- Corpus Christi Employee
- Corpus Christi Employee Dependent
- DoD Civilian
- Ed Assist employer
- Employer Reimbursement
- Financial Aid
- Installations
- Lonestar College Dependent
- Lonestar College Employee**
- Methodist Healthcare Dependent
- Methodist Healthcare Employee
- Methodist Healthcare Ministries Dependent

**Fill in Academic Interest information. Under the field "Partnerships & Affiliations" select Lonestar College Employee or Lonestar College Dependent. Complete the rest of the application and click "Submit" on the last page. Be sure to send in any college transcripts.**

## **Now that you have applied:**

- **Submit Required Documents.**
  - **School of Professional Studies (Online Degrees): [sps.uiw.edu/admissions/index.html](https://sps.uiw.edu/admissions/index.html)**
- **Look for Your Acceptance Letter.**
- **Complete and return the Lone Star College Tuition Discount Program Form to [eapapply@uiwtx.edu](mailto:eapapply@uiwtx.edu).**
- **Attend Student Orientation.**
- **Register For Classes.**
- **Keep Going Strong to Graduation!**

**For questions, email [eapadmission@uiwtx.edu](mailto:eapadmission@uiwtx.edu) or call (210) 757-0202.**