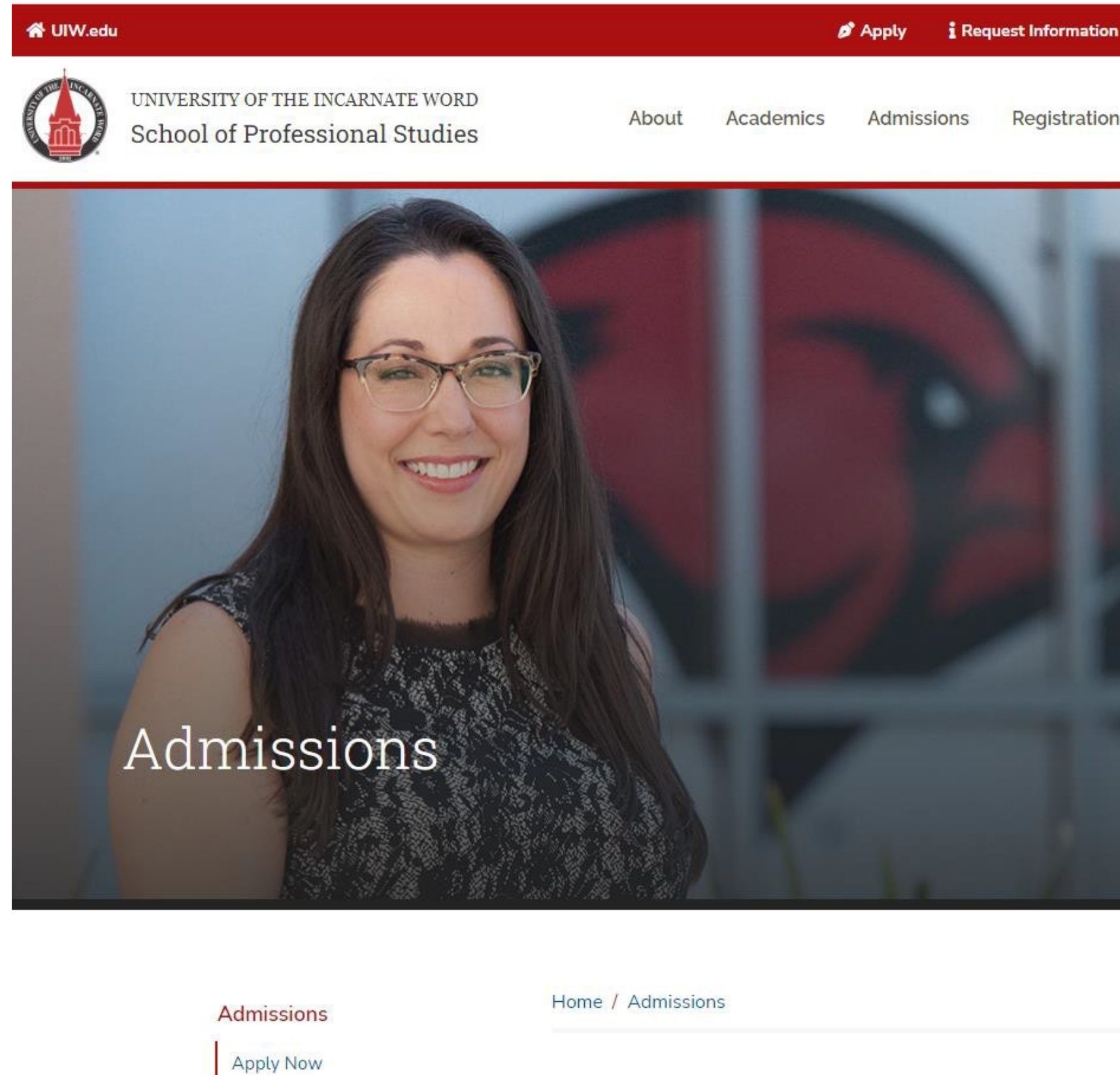




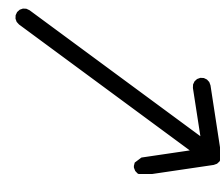
**UNIVERSITY OF THE
INCARNATE WORD®**

**How to Apply Using the City of Dallas
Tuition Discount Program**

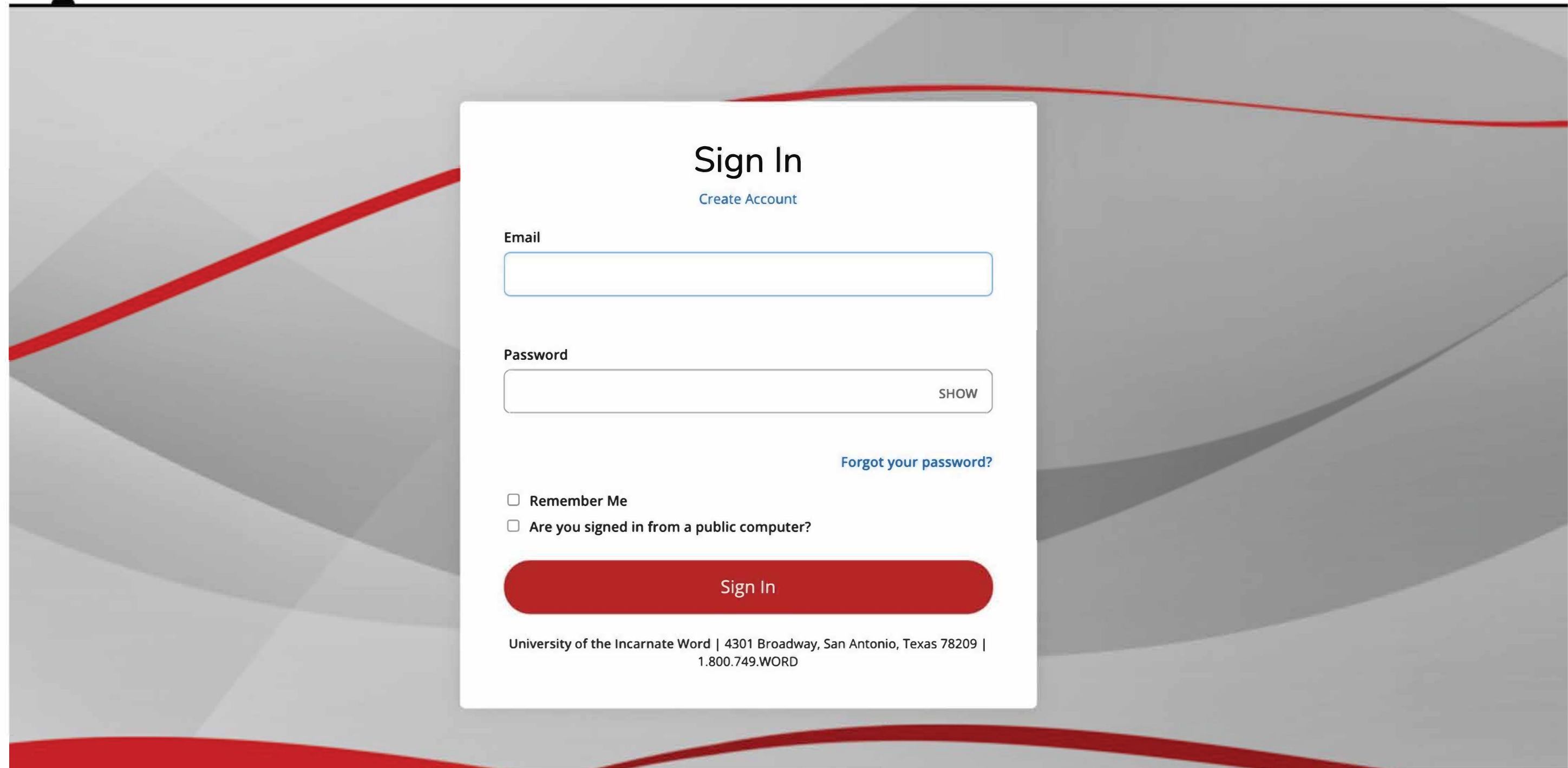
Step 1: Go to <https://sps.uiw.edu/admissions>



**Step 2: Click on
"Apply Now"**



Shortcut: Go directly to <https://uiw.elluciancrmrecruit.com/ApplyEAP/>



Sign In
[Create Account](#)

Email

Password
 [SHOW](#)

[Forgot your password?](#)

☐ Remember Me
☐ Are you signed in from a public computer?

[Sign In](#)

University of the Incarnate Word | 4301 Broadway, San Antonio, Texas 78209 | 1.800.749.WORD

Create a UIW application account, if you don't have one already, or sign into your current account.

School of Professional Studies

My Account

Welcome, Camila! The School of Professional Studies at UIW is tailored to the working professional with 8-week terms and classes 100% online or in the classroom. We work with you to create a personalized path to your UIW degree to help you meet your goals in life and your career!

My Applications

Create a New Application for the School of Professional Studies

APPLICATION	STATUS	ACTION


Need Help?

School of Professional Studies Admissions Office

4301 Broadway
San Antonio, TX 78209

Phone 800-318-1876
Local Phone 210-757-0202

Program Spotlight



Create a new application or complete a started application, if you have already started one.

School of Professional Studies

[Personal](#) [Academic Interest](#) [Demographics](#) [Academics](#) [Certification & Signature](#)

Please enter your information in each of the following sections. Fields with a red asterisk (*) are required and must be completed before you can submit your application. Additional questions may become required based on your answers to a previous question.

Name

Prefix

First Name *

Please use legal name.

Middle Name

.

Last Name *

Please use legal name.

Former Last Name

.

Suffix

Gender *

Birth Date *

(mm/dd/yyyy)

Shirt Size

.

Marital Status

Fill out application information on each tab.

On the application, fill out the 'Partnerships & Affiliations' under the 'Academic Interest' tab and select 'City of Dallas Employee' or 'City of Dallas Dependent'.

The screenshot shows a web application with a navigation bar at the top containing the following tabs: Personal, Academic Interest (which is the active tab), Demographics, Academics, and Certification & Signature. Below the navigation bar, a message states: "Please enter your information in each of the following sections. Fields with a red asterisk (*) are required and must be complete required based on your answers to a previous question." The "Academic Plans" section contains two dropdown menus: "Anticipated Entry Term:" (set to "Fall 2024") and "Part of Term:". Below these is a "Preferred Learning Format" dropdown menu. To the right of the "Preferred Learning Format" dropdown is a section titled "Partnerships & Affiliations *" which includes the instruction "Specify the partner or affiliate associated with this application." and a dropdown menu. This entire "Partnerships & Affiliations" section is circled in red.

Partnership or Affiliation *

Specify the partner or affiliate associated with this application.

A dropdown menu with a downward arrow icon on the right side.

- Active Duty using VA Benefits
- Active Duty, not using TA or VA benefits
- CCVI Ministry Employee
- CCVI Ministry Employee Dependent
- Christus Employee
- Christus Employee Dependent
- City of Dallas Dependent
- City of Dallas Employee**
- City of Houston Dependent
- City of Houston Employee
- Coopersmith Career Consulting
- Corpus Christi Employee
- Corpus Christi Employee Dependent
- DoD Civilian
- Ed Assist employer
- Employer Reimbursement
- Financial Aid
- Installations
- Lonestar College Dependent

Fill in Academic Interest information.
Select City of Dallas Employee or City of Dallas Dependent.

Now that you have applied:

1. Submit Required Documents.

- **School of Professional Studies (Online Degrees):** sps.uiw.edu/admissions/index.html

2. Look for Your Acceptance Letter.

3. Complete and return the City of Dallas Tuition Discount

Program Form to eapapply@uiwtx.edu.

4. Attend Student Orientation.

5. Register For Classes.

6. Keep Going Strong to Graduation!

For any questions reach out to eapadmission@uiwtx.edu or (210) 757-0202.