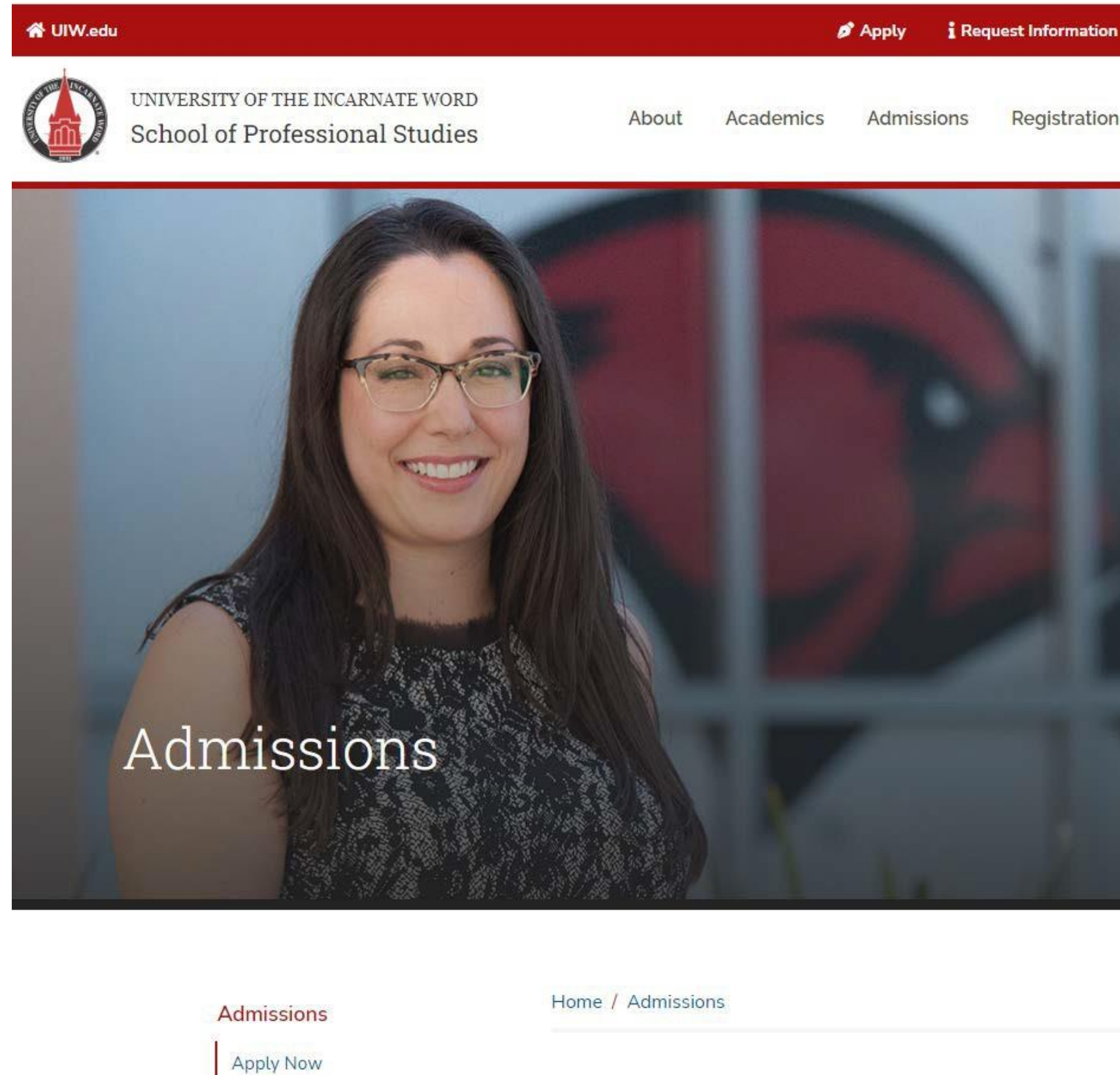




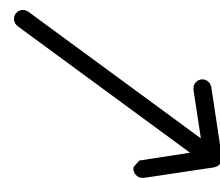
**UNIVERSITY OF THE
INCARNATE WORD®**

**How to Apply Using the STRIC Tuition
Discount Program**

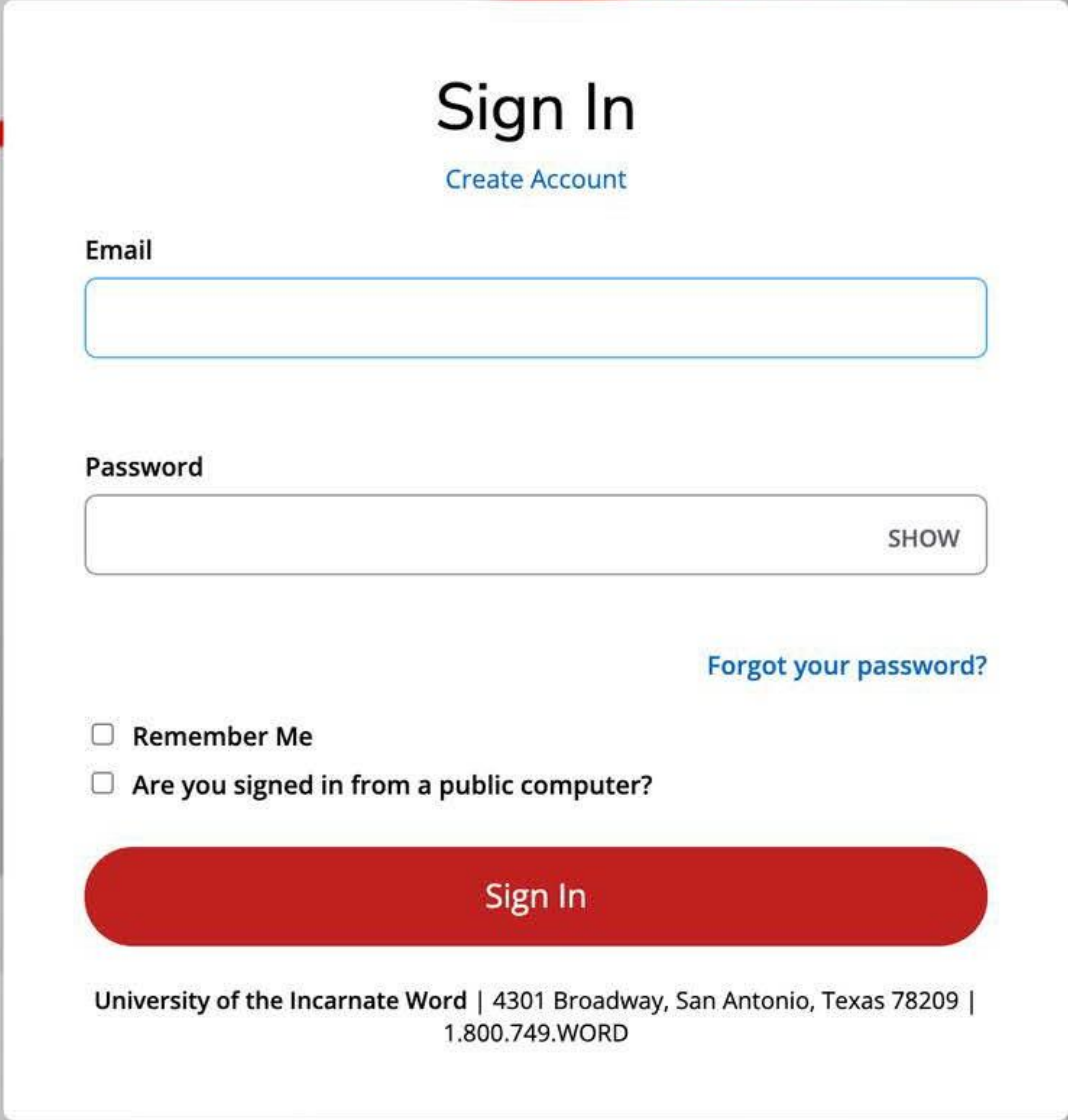
Step 1: Go to <https://sps.uiw.edu/admissions>



**Step 2: Click on
"Apply Now"**



Shortcut: Go directly to <https://uiw.elluciancrmrecruit.com/ApplyEAP/>



The image shows a 'Sign In' form centered on a grey background with red wavy lines. The form is white and contains the following elements: a title 'Sign In' with a 'Create Account' link below it; an 'Email' input field; a 'Password' input field with a 'SHOW' button; a 'Forgot your password?' link; two checkboxes for 'Remember Me' and 'Are you signed in from a public computer?'; a large red 'Sign In' button; and contact information for the University of the Incarnate Word at the bottom.

Sign In
[Create Account](#)

Email

Password
 SHOW

[Forgot your password?](#)

Remember Me
 Are you signed in from a public computer?

Sign In

University of the Incarnate Word | 4301 Broadway, San Antonio, Texas 78209 |
1.800.749.WORD

Create a UIW application account, if you don't have one already, or sign into your current account.

School of Professional Studies

My Account

Welcome, Camila! The School of Professional Studies at UIW is tailored to the working professional with 8-week terms and classes 100% online or in the classroom. We work with you to create a personalized path to your UIW degree to help you meet your goals in life and your career!

My Applications

[Create a New Application for the School of Professional Studies](#)


APPLICATION	STATUS	ACTION

Need Help?

School of Professional Studies Admissions Office
4301 Broadway
San Antonio, TX 78209

Phone 800-318-1876
Local Phone 210-757-0202

Program Spotlight



Create a new application or complete a started application, if you have already started one.

School of Professional Studies

[Personal](#) [Academic Interest](#) [Demographics](#) [Academics](#) [Certification & Signature](#)

Please enter your information in each of the following sections. Fields with a red asterisk (*) are required and must be completed before you can submit your application. Additional questions may become required based on your answers to a previous question.

Name

Prefix

First Name *

Please use legal name.

Middle Name

Last Name *

Please use legal name.

Former Last Name

Suffix

Gender *

Birth Date *

(mm/dd/yyyy)

Shirt Size

Marital Status

Fill out application information.

On the application, fill out the 'Partnerships & Affiliations' under the 'Academic Interest' tab and select 'South Texas Radiology GR Employee/Dependent' or 'South Texas Radiology UG Employee/Dependent'.

Personal Academic Interest Demographics Academics Certification & Signature

Please enter your information in each of the following sections. Fields with a red asterisk (*) are required and must be complete based on your answers to a previous question.

Academic Plans

Anticipated Entry Term: * Part of Term: *

Preferred Learning Format * Partnerships & Affiliations *

Specify the partner or affiliate associated with this application.

Partnership or Affiliation *

Specify the partner or affiliate associated with this application.

- San Antonio Chamber of Commerce Dependent
- San Antonio Chamber of Commerce Employee
- South Texas Radiology GR Dependent**
- South Texas Radiology GR Employee**
- South Texas Radiology UG Dependent
- South Texas Radiology UG Employee
- TA Tuition Assistance Air Force
- TA Tuition Assistance Army
- TA Tuition Assistance Coast Guard
- TA Tuition Assistance Marines
- TA Tuition Assistance Navy

Fill in Academic Interest information.

Select South Texas Radiology GR Employee or South Texas Radiology GR Dependent for Graduate programs.

Or

Select South Texas Radiology UG Employee or South Texas Radiology UG Dependent for Undergraduate programs.

Now that you have applied:

1. Submit Required Documents.

- **School of Professional Studies (Online Degrees):** sps.uiw.edu/admissions/index.html

2. Look for Your Acceptance Letter.

3. Complete and return the South Texas Radiology Imaging Centers (STRIC) Tuition Discount Program Form to eapapply@uiwtx.edu.

4. Attend Student Orientation.

5. Register For Classes.

6. Keep Going Strong to Graduation!

For any questions reach out to eapadmission@uiwtx.edu or (210) 757-0202.