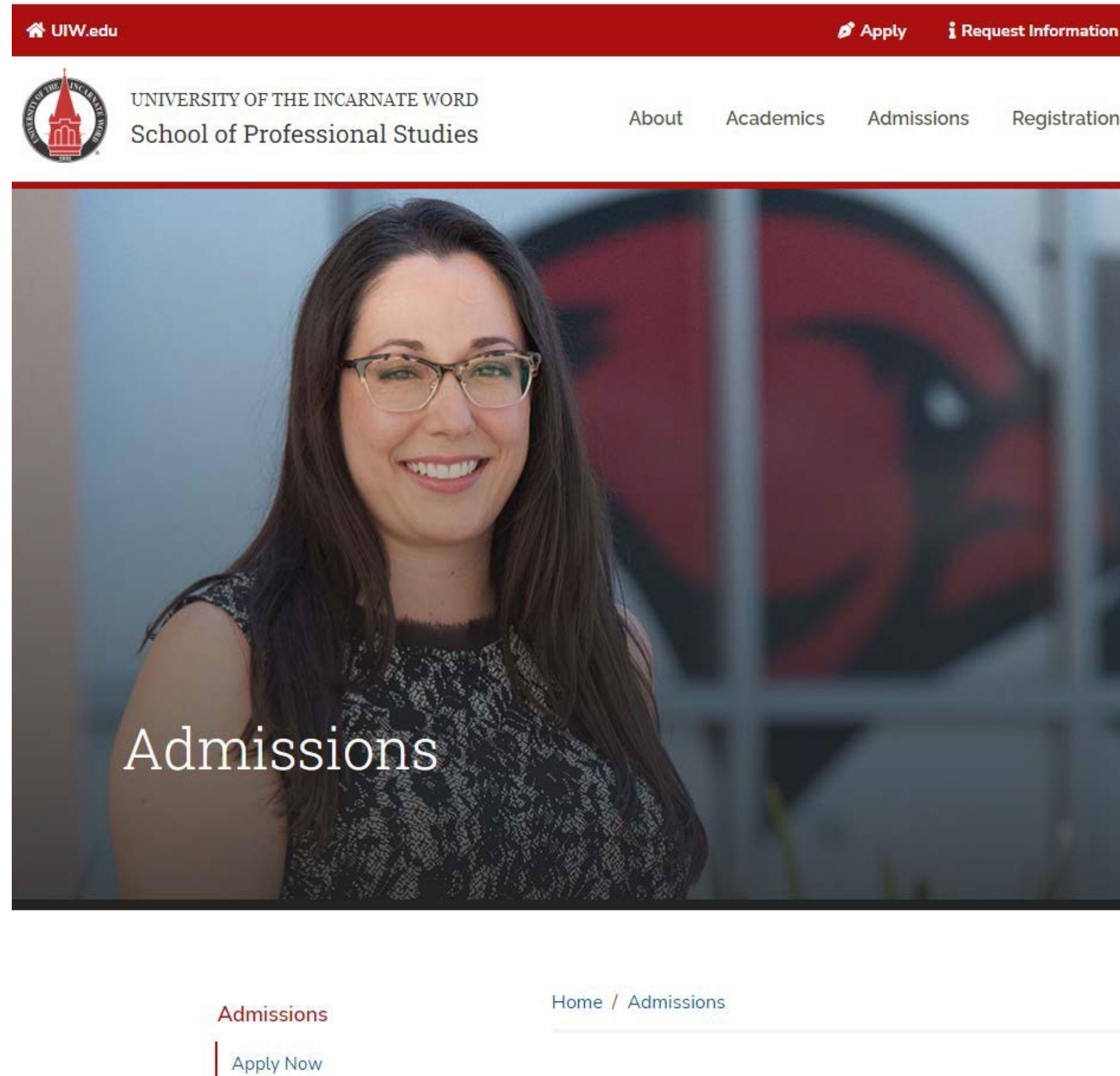




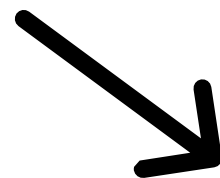
**UNIVERSITY OF THE
INCARNATE WORD®**

**How to Apply Using the City of Corpus Christi
Tuition Discount Program**

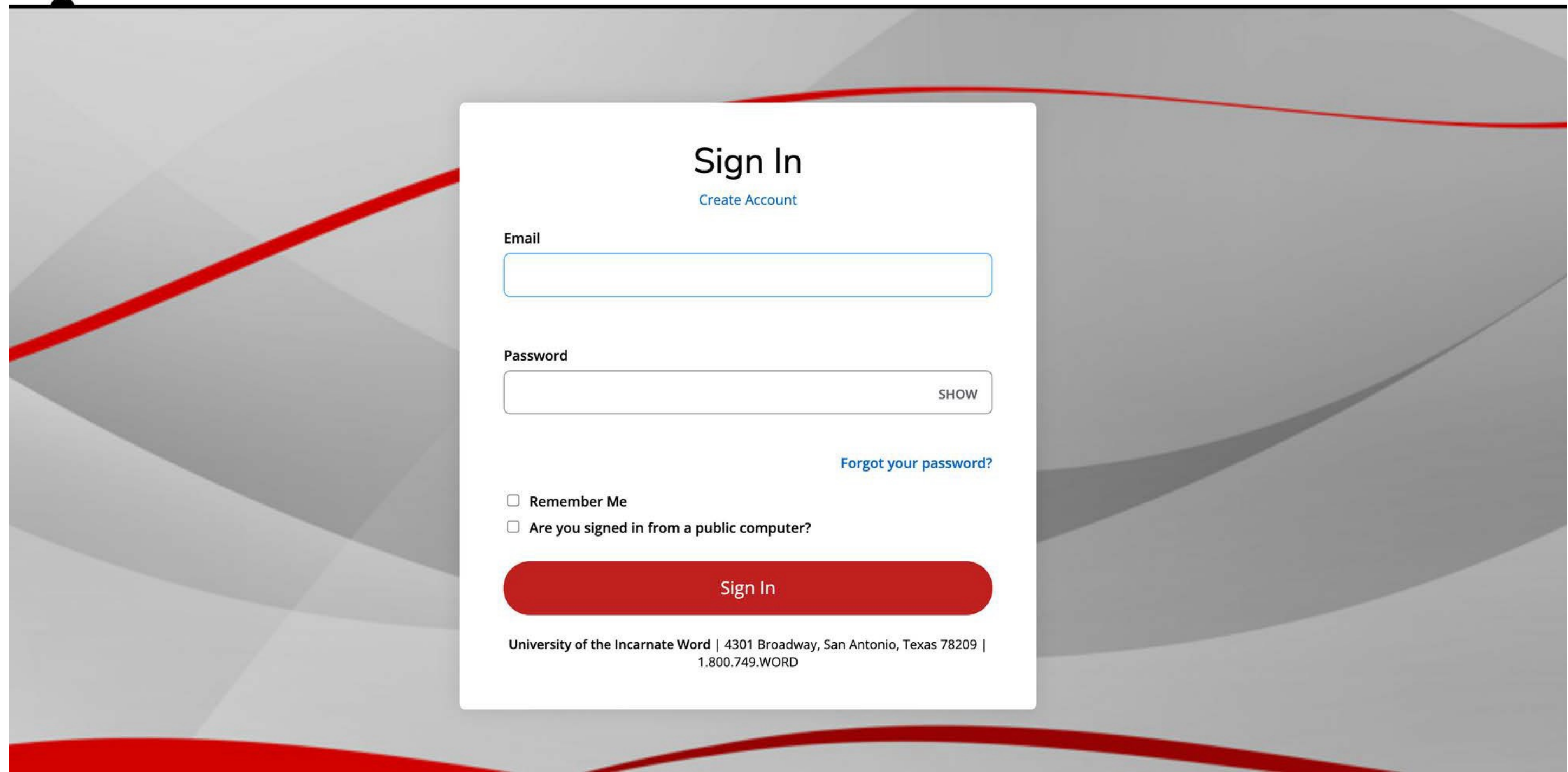
Step 1: Go to <https://sps.uiw.edu/admissions>



**Step 2: Click on
"Apply Now"**



Shortcut: Go directly to <https://uiw.elluciancrmrecruit.com/ApplyEAP/>



**Create a GoUIW account, if you don't have one already,
or sign into your current account.**

School of Professional Studies

[Personal](#) [Academic Interest](#) [Demographics](#) [Academics](#) [Certification & Signature](#)

Please enter your information in each of the following sections. Fields with a red asterisk (*) are required and must be completed before you can submit your application. Additional questions may become required based on your answers to a previous question.

Name

Prefix

First Name *

Please use legal name.

Middle Name

Last Name *

Please use legal name.

Former Last Name

Suffix

Gender *

Birth Date *

(mm/dd/yyyy)

Shirt Size

Marital Status

Fill out application information.

On the application, fill out the 'Partnerships & Affiliations' under the 'Academic Interest' tab and select 'Corpus Christi Employee' or 'Corpus Christi Employee Dependent'.

The screenshot shows the 'Academic Interest' tab selected in a navigation bar. Below the navigation bar, there is a section titled 'Academic Plans' with two dropdown menus: 'Anticipated Entry Term: *' (set to 'Fall 2024') and 'Part of Term: *'. Below these is a 'Preferred Learning Format *' dropdown menu. To the right of the 'Preferred Learning Format' dropdown is a 'Partnerships & Affiliations *' dropdown menu, which is circled in red. The 'Partnerships & Affiliations' dropdown menu is open, showing a list of options.

Partnership or Affiliation *

Specify the partner or affiliate associated with this application.

The dropdown menu is open, showing a list of options. The options are: Active Duty using VA Benefits, Active Duty, not using TA or VA benefits, CCVI Ministry Employee, CCVI Ministry Employee Dependent, Christus Employee, Christus Employee Dependent, City of Dallas Dependent, City of Dallas Employee, City of Houston Dependent, City of Houston Employee, Coopersmith Career Consulting, **Corpus Christi Employee**, Corpus Christi Employee Dependent, DoD Civilian, Ed Assist employer, Employer Reimbursement, Financial Aid, Installations, and Lonestar College Dependent. The 'Corpus Christi Employee' option is highlighted in blue.

Fill in Academic Interest information.

Select Corpus Christi Employee or Corpus Christi Employee Dependent.

Now that you have applied:

1. Submit Required Documents.

- **School of Professional Studies (Online Degrees): sps.uiw.edu/admissions/index.html**

2. Look for Your Acceptance Letter.

3. Complete and return the City of Corpus Christi Tuition Discount Program Form to eapapply@uiwtx.edu.

4. Attend Student Orientation.

5. Register For Classes.

6. Keep Going Strong to Graduation!

For any questions reach out to eapadmission@uiwtx.edu or (210) 757-0202.