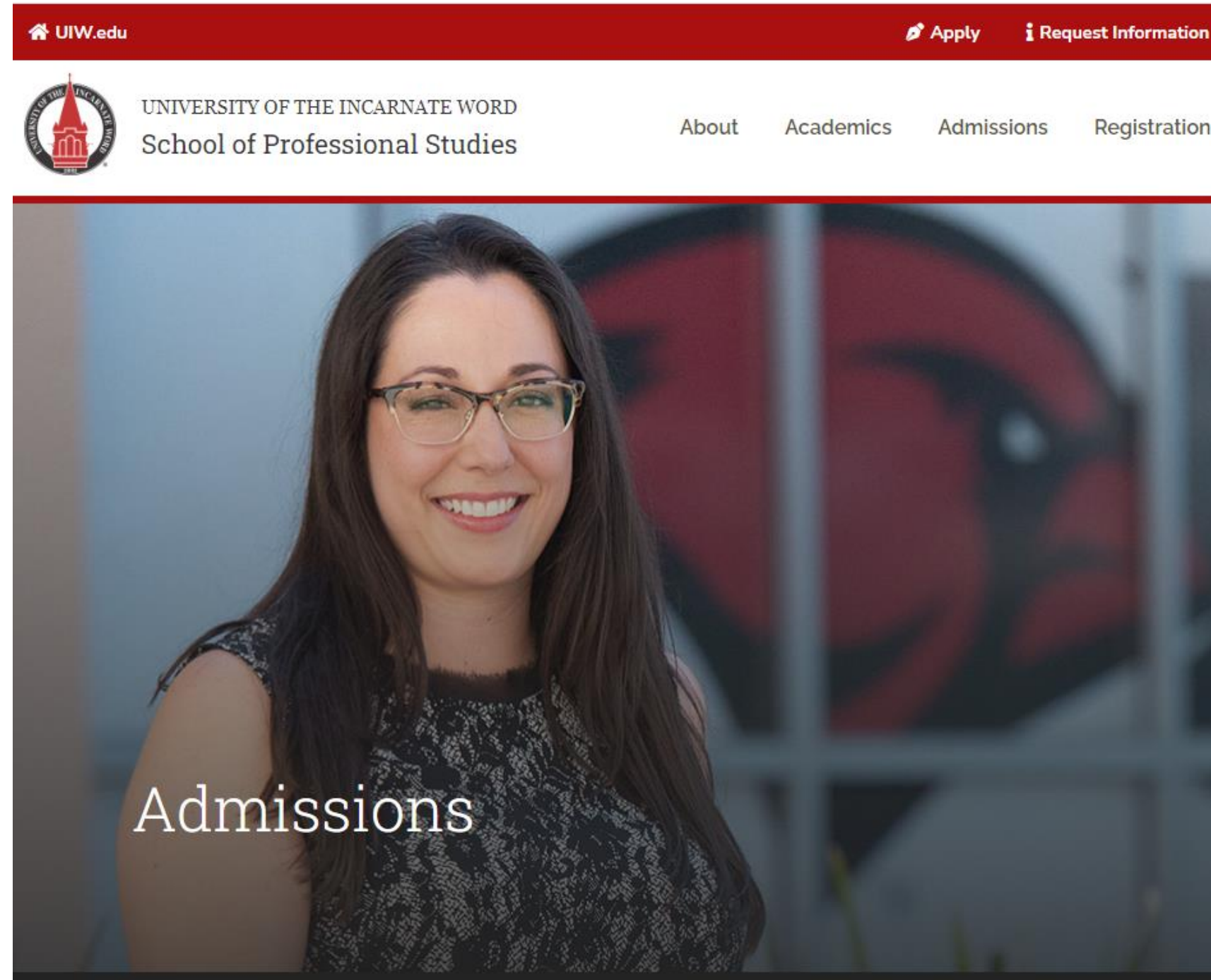




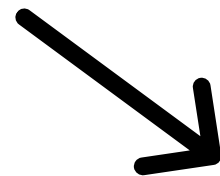
**UNIVERSITY OF THE  
INCARNATE WORD®**

**How to Apply Using the San Antonio Chamber of Commerce  
Tuition Discount Program**

# Step 1: Go to <https://sps.uiw.edu/admissions>



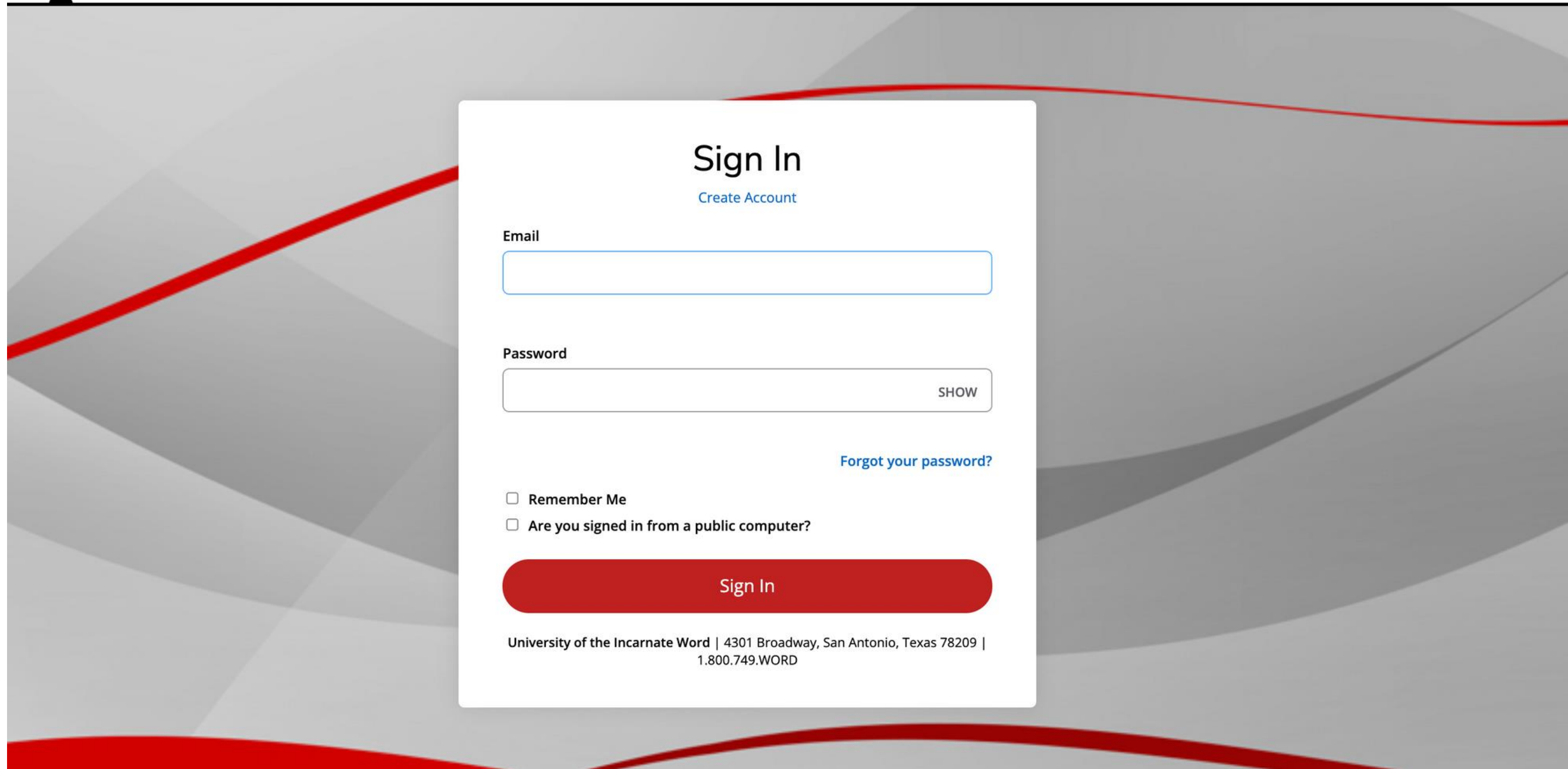
Step 2: Click on  
"Apply Now"



Admissions  
| Apply Now

Home / Admissions

Shortcut: Go directly to <https://uiw.elluciancrmrecruit.com/ApplyEAP/>



**Sign In**  
[Create Account](#)

Email

Password  
 SHOW

[Forgot your password?](#)

Remember Me  
 Are you signed in from a public computer?

**Sign In**

University of the Incarnate Word | 4301 Broadway, San Antonio, Texas 78209 |  
1.800.749.WORD

**Create a GoUIW account, if you don't have one already,  
or sign into your current account.**



# School of Professional Studies

[Personal](#) [Academic Interest](#) [Demographics](#) [Academics](#) [Certification & Signature](#)

Please enter your information in each of the following sections. Fields with a red asterisk (\*) are required and must be completed before you can submit your application. Additional questions may become required based on your answers to a previous question.

## Name

Prefix

First Name \*

Please use legal name.

Middle Name

Last Name \*

Please use legal name.

Former Last Name

Suffix

Gender \*

Birth Date \*

(mm/dd/yyyy)

Shirt Size

Marital Status

**Fill out application information on each tab.**

**On the applications, fill out the 'How do you plan to pay for your tuition?' under the 'Academic Interest' tab and select 'San Antonio Chamber of Commerce Employee' or 'San Antonio Chamber of Commerce Employee Dependent'.**

Personal **Academic Interest** Demographics Academics Certification & Signature

Please enter your information in each of the following sections. Fields with a red asterisk (\*) are required and must be completed before you can submit your application. Additional questions may become required based on your answers to a previous question.

**Academic Plans**

Anticipated Entry Term: \*  Part of Term: \*

Preferred Learning Format \*  Intended Major \*

Center: \*  **How do you plan to pay your tuition? \***  
The UIW Online location should only be selected when the learning format is also Online. Please choose your primary payment method although you may utilize multiple sources.

Applying as a: \*  Graduate

[Previous Page](#) [Save Application](#) [Save & Continue](#)

**How do you plan to pay your tuition? \***

Please choose your primary payment method although you may utilize multiple sources.

- Military Dependent
- Pay in Full
- San Antonio Chamber of Commerce Dependent**
- San Antonio Chamber of Commerce Employee**
- TA Tuition Assistance Air Force
- TA Tuition Assistance Army
- TA Tuition Assistance Coast Guard
- TA Tuition Assistance Marines
- TA Tuition Assistance Navy

**Fill in Academic Interest information. Under the field "How do you plan to pay your tuition?" select San Antonio Chamber of Commerce Employee or San Antonio Chamber of Commerce Employee Dependent.**

**Complete the rest of the application and click "Submit" on the last page. Be sure to send in any college transcripts.**

## **Now that you have applied:**

- **Submit Required Documents.**
  - **School of Professional Studies (Online Degrees): [sps.uiw.edu/admissions/index.html](https://sps.uiw.edu/admissions/index.html)**
- **Look for Your Acceptance Letter.**
- **Complete and return the Lone Star College Tuition Discount Program Form to [eapapply@uiwtx.edu](mailto:eapapply@uiwtx.edu).**
- **Attend Student Orientation.**
- **Register For Classes.**
- **Keep Going Strong to Graduation!**

**For questions, email [eapadmission@uiwtx.edu](mailto:eapadmission@uiwtx.edu) or call (210) 757-0202.**