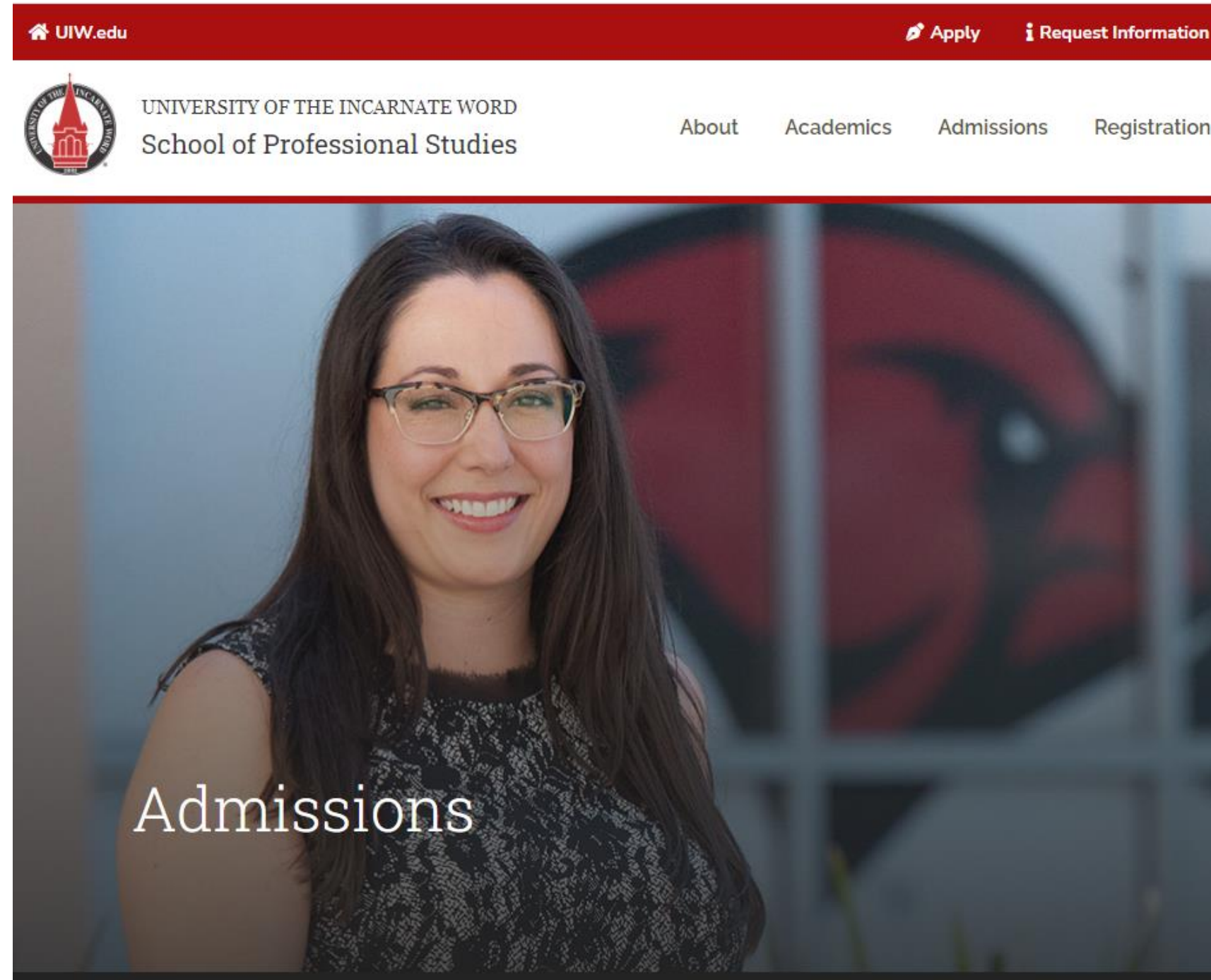




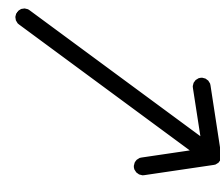
**UNIVERSITY OF THE
INCARNATE WORD®**

**How to Apply Using the Lone Star College
Tuition Discount Program**

Step 1: Go to <https://sps.uiw.edu/admissions>



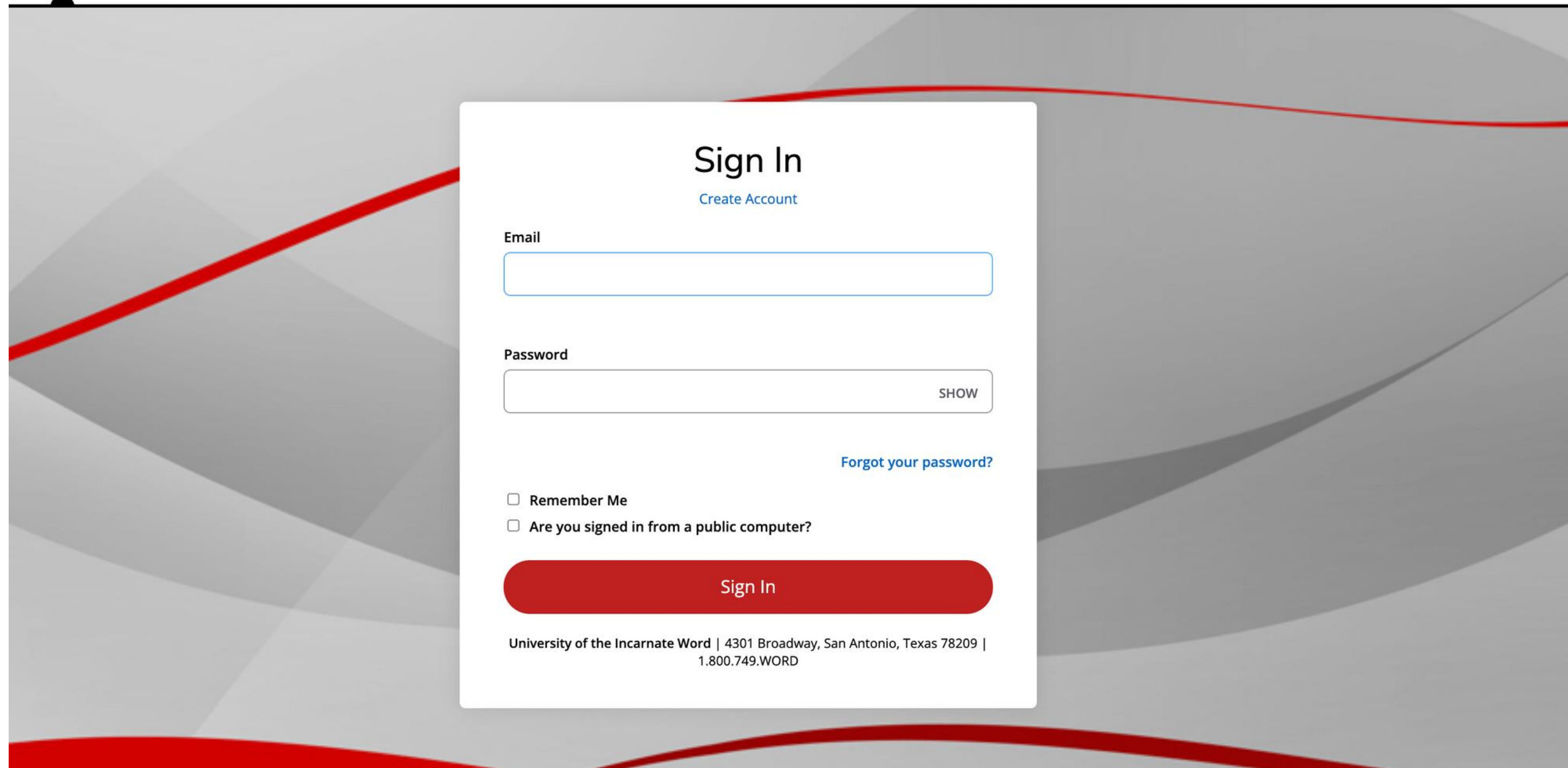
Step 2: Click on
"Apply Now"



Admissions
| Apply Now

Home / Admissions

Shortcut: Go directly to <https://uiw.elluciancrmrecruit.com/ApplyEAP/>



Sign In
[Create Account](#)

Email

Password
 SHOW

[Forgot your password?](#)

Remember Me
 Are you signed in from a public computer?

Sign In

University of the Incarnate Word | 4301 Broadway, San Antonio, Texas 78209 |
1.800.749.WORD

**Create a GoUIW account, if you don't have one already,
or sign into your current account.**

School of Professional Studies

My Account

Welcome, Camila! The School of Professional Studies at UIW is tailored to the working professional with 8-week terms and classes 100% online or in the classroom. We work with you to create a personalized path to your UIW degree to help you meet your goals in life and your career!

My Applications

[Create a New Application for the School of Professional Studies](#)

APPLICATION	STATUS	ACTION
-------------	--------	--------

Need Help?

School of Professional Studies Admissions Office

4301 Broadway
San Antonio, TX 78209

Phone 800-318-1876
Local Phone 210-757-0202

Program Spotlight



Create a new application or complete a started application, if you have already started one.

School of Professional Studies

[Personal](#) [Academic Interest](#) [Demographics](#) [Academics](#) [Certification & Signature](#)

Please enter your information in each of the following sections. Fields with a red asterisk (*) are required and must be completed before you can submit your application. Additional questions may become required based on your answers to a previous question.

Name

Prefix

First Name *

Please use legal name.

Middle Name

Last Name *

Please use legal name.

Former Last Name

Suffix

Gender *

Birth Date *

(mm/dd/yyyy)

Shirt Size

Marital Status

Fill out application information on each tab.

On the applications, fill out the 'How do you plan to pay for your tuition?' under the 'Academic Interest' tab and select 'Lone Star College Employee' or 'Lone Star College Employee Dependent'.

Personal Academic Interest Demographics Academics Certification & Signature

Please enter your information in each of the following sections. Fields with a red asterisk (*) are required and must be completed before you can submit your application. Additional questions may become required based on your answers to a previous question.

Academic Plans

Anticipated Entry Term: * Part of Term: *

Preferred Learning Format * Intended Major *

Center: *
The UIW Online location should only be selected when the learning format is also Online.

How do you plan to pay your tuition? *
Please choose your primary payment method although you may utilize multiple sources.

Applying as a: *

[Previous Page](#) [Save Application](#) [Save & Continue](#)

How do you plan to pay your tuition? *

Please choose your primary payment method although you may utilize multiple sources.

- Ed Assist employer
- Employer Reimbursement
- Financial Aid
- Installations
- Lonestar College Dependent**
- Lonestar College Employee**
- Methodist Healthcare Dependent
- Methodist Healthcare Employee

Fill in Academic Interest information. Under the field "How do you plan to pay your tuition?" select Lone Star College Employee or Lone Star College Employee Dependent. Complete the rest of the application and click "Submit" on the last page. Be sure to send in any college transcripts.

Now that you have applied:

- **Submit Required Documents.**
 - **School of Professional Studies (Online Degrees): sps.uiw.edu/admissions/index.html**
- **Look for Your Acceptance Letter.**
- **Complete and return the Lone Star College Tuition Discount Program Form to eapapply@uiwtx.edu.**
- **Attend Student Orientation.**
- **Register For Classes.**
- **Keep Going Strong to Graduation!**

For questions, email eapadmission@uiwtx.edu or call (210) 757-0202.