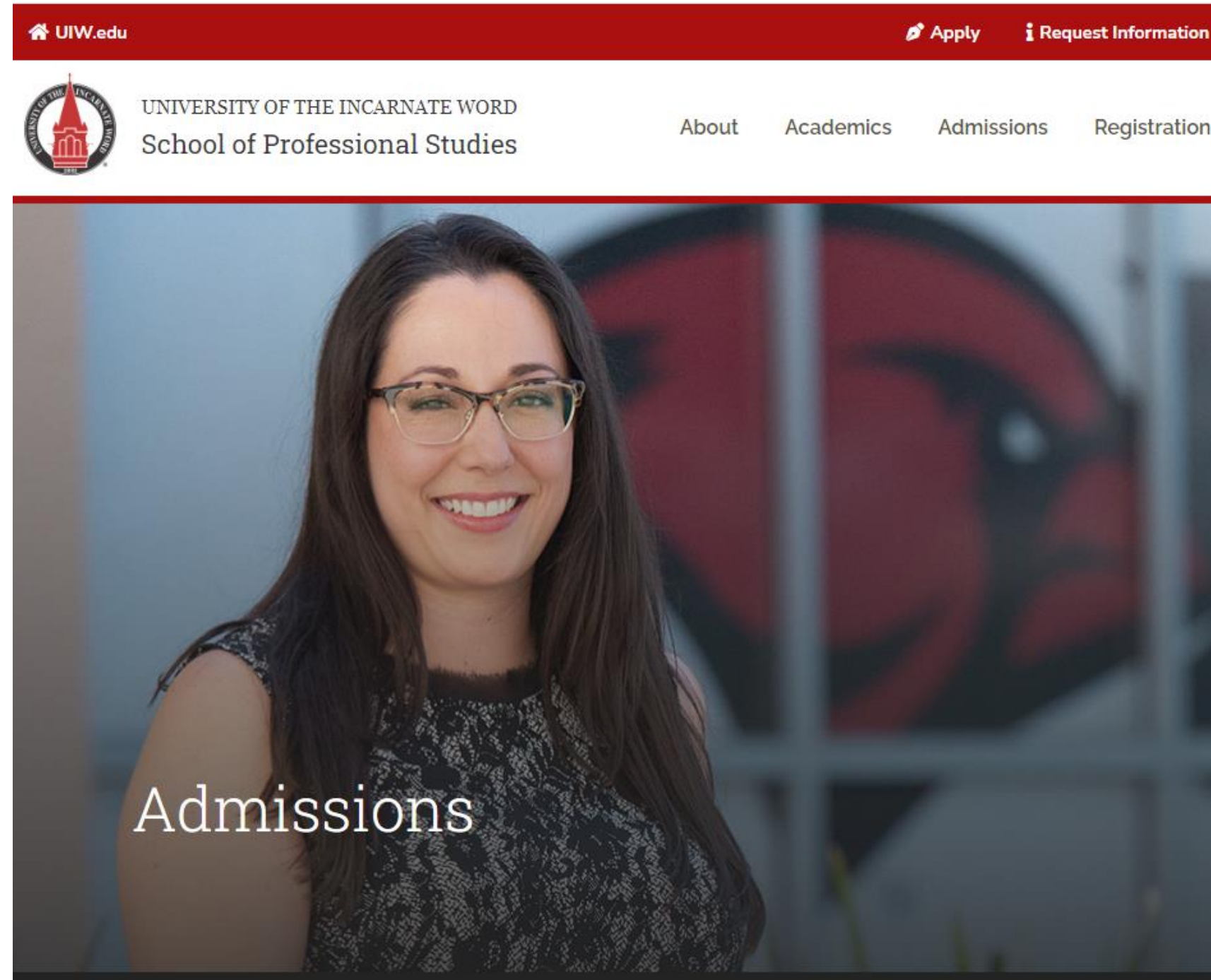




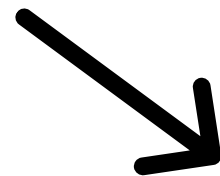
**UNIVERSITY OF THE  
INCARNATE WORD®**

**How to Apply Using the City of Dallas  
Tuition Discount Program**

# Step 1: Go to <https://sps.uiw.edu/admissions>



Step 2: Click on  
"Apply Now"

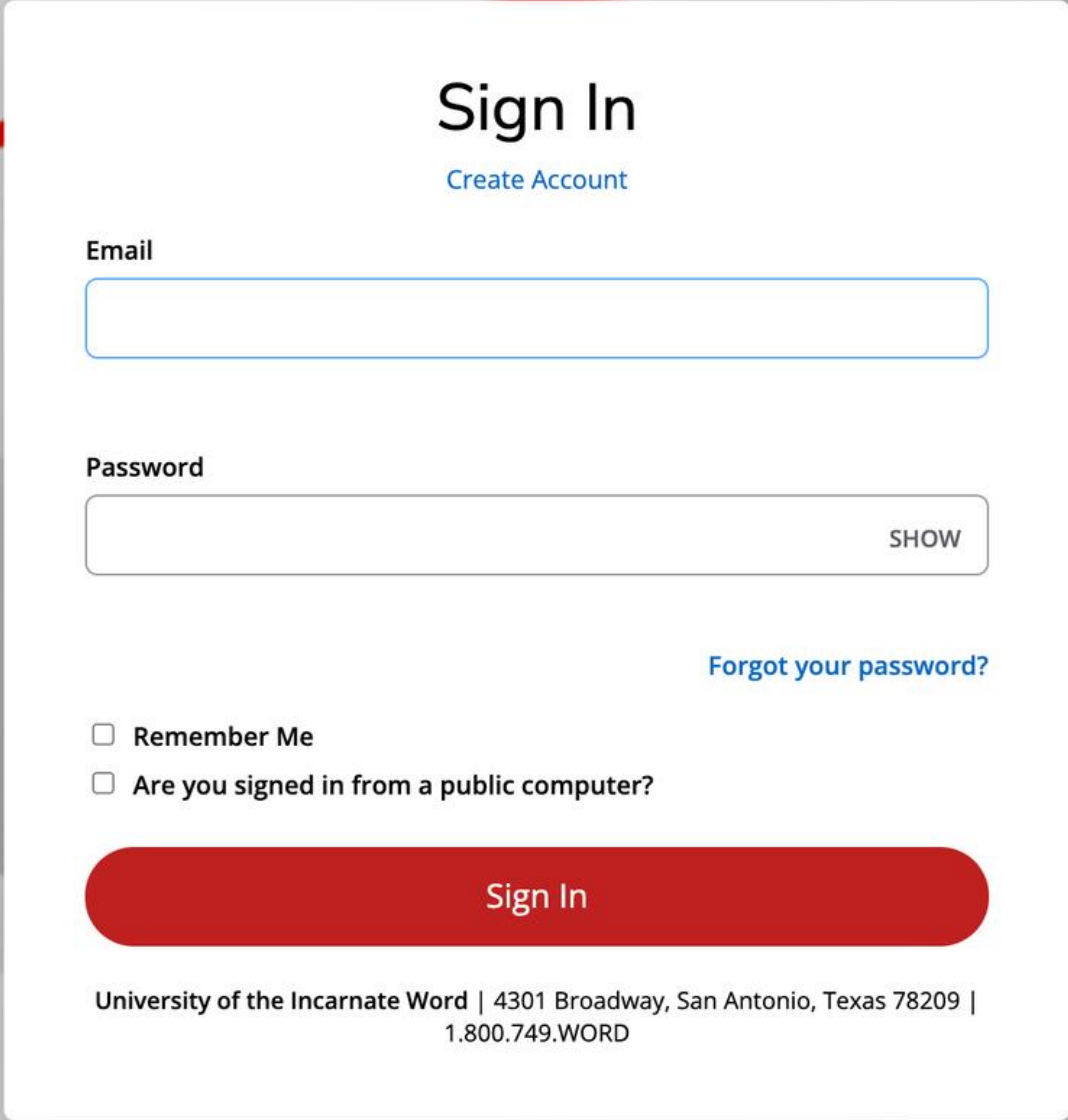


Admissions

Apply Now

Home / Admissions

Shortcut: Go directly to <https://uiw.elluciancrmrecruit.com/ApplyEAP/>



The image shows a 'Sign In' form centered on a grey background with red wavy lines. The form is white and contains the following elements: a title 'Sign In' with a 'Create Account' link below it; an 'Email' input field; a 'Password' input field with a 'SHOW' button; a 'Forgot your password?' link; two checkboxes for 'Remember Me' and 'Are you signed in from a public computer?'; a large red 'Sign In' button; and footer text for the University of the Incarnate Word.

**Sign In**  
[Create Account](#)

Email

Password  
 SHOW

[Forgot your password?](#)

Remember Me  
 Are you signed in from a public computer?

**Sign In**

University of the Incarnate Word | 4301 Broadway, San Antonio, Texas 78209 |  
1.800.749.WORD

**Create a GoUIW account, if you don't have one already,  
or sign into your current account.**



# School of Professional Studies

Personal Academic Interest Demographics Academics Certification & Signature

Please enter your information in each of the following sections. Fields with a red asterisk (\*) are required and must be completed before you can submit your application. Additional questions may become required based on your answers to a previous question.

## Name

Prefix

First Name \*

Please use legal name.

Middle Name

Last Name \*

Please use legal name.

Former Last Name

Suffix

Gender \*

Birth Date \*

(mm/dd/yyyy)

Shirt Size

Marital Status

**Fill out application information on each tab.**

**On the applications, fill out the 'How do you plan to pay for your tuition?' under the 'Academic Interest' tab and select 'City of Dallas Employee' or 'City of Dallas Employee Dependent'.**

Personal **Academic Interest** Demographics Academics Certification & Signature

Please enter your information in each of the following sections. Fields with a red asterisk (\*) are required and must be completed before you can submit your application. Additional questions may become required based on your answers to a previous question.

**Academic Plans**

Anticipated Entry Term: \*  Part of Term: \*

Preferred Learning Format \*  Intended Major \*

Center: \*  **How do you plan to pay your tuition? \***  
The UIW Online location should only be selected when the learning format is also Online. Please choose your primary payment method although you may utilize multiple sources.

Applying as a: \*  Graduate

[Previous Page](#) [Save Application](#) [Save & Continue](#)

**How do you plan to pay your tuition? \***

Please choose your primary payment method although you may utilize multiple sources.

- Active Duty using VA Benefits
- Active Duty, not using TA or VA benefits
- CCVI Ministry Employee
- CCVI Ministry Employee Dependent
- Christus Employee
- Christus Employee Dependent
- City of Dallas Dependent
- City of Dallas Employee**

**Fill in Academic Interest information. Under the field "How do you plan to pay your tuition?" select City of Dallas Employee or City of Dallas Employee Dependent. Complete the rest of the application and click "Submit" on the last page. Be sure to send in any college transcripts.**

## **Now that you have applied:**

- **Submit Required Documents.**
  - **School of Professional Studies (Online Degrees): [sps.uiw.edu/admissions/index.html](https://sps.uiw.edu/admissions/index.html)**
- **Look for Your Acceptance Letter.**
- **Complete and return the Lone Star College Tuition Discount Program Form to [eapapply@uiwtx.edu](mailto:eapapply@uiwtx.edu).**
- **Attend Student Orientation.**
- **Register For Classes.**
- **Keep Going Strong to Graduation!**

**For questions, email [eapadmission@uiwtx.edu](mailto:eapadmission@uiwtx.edu) or call (210) 757-0202.**