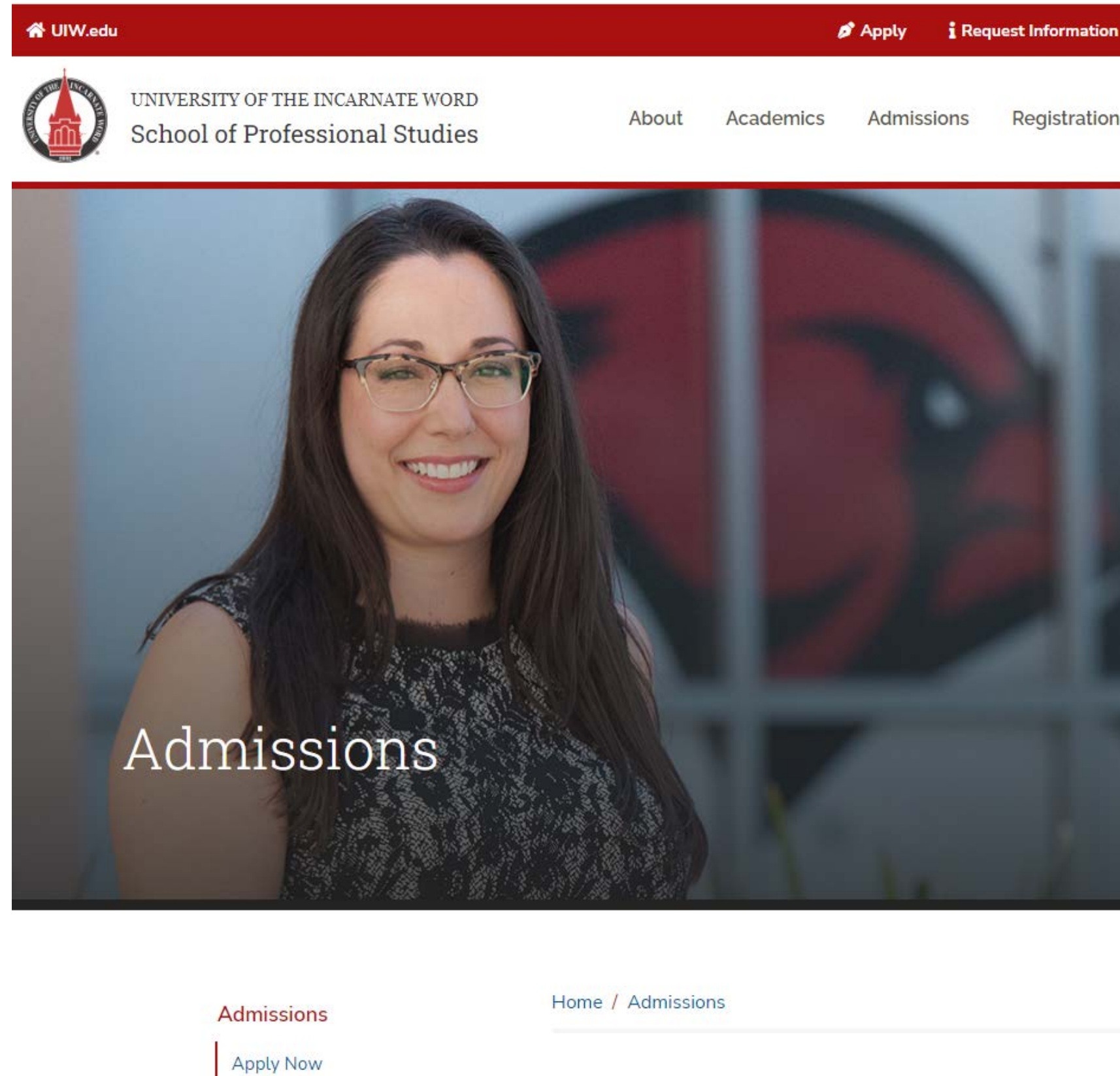




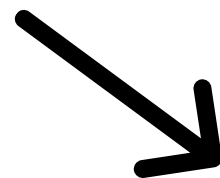
**UNIVERSITY OF THE
INCARNATE WORD®**

**How to Apply Using the City of Corpus Christi
Tuition Discount Program**

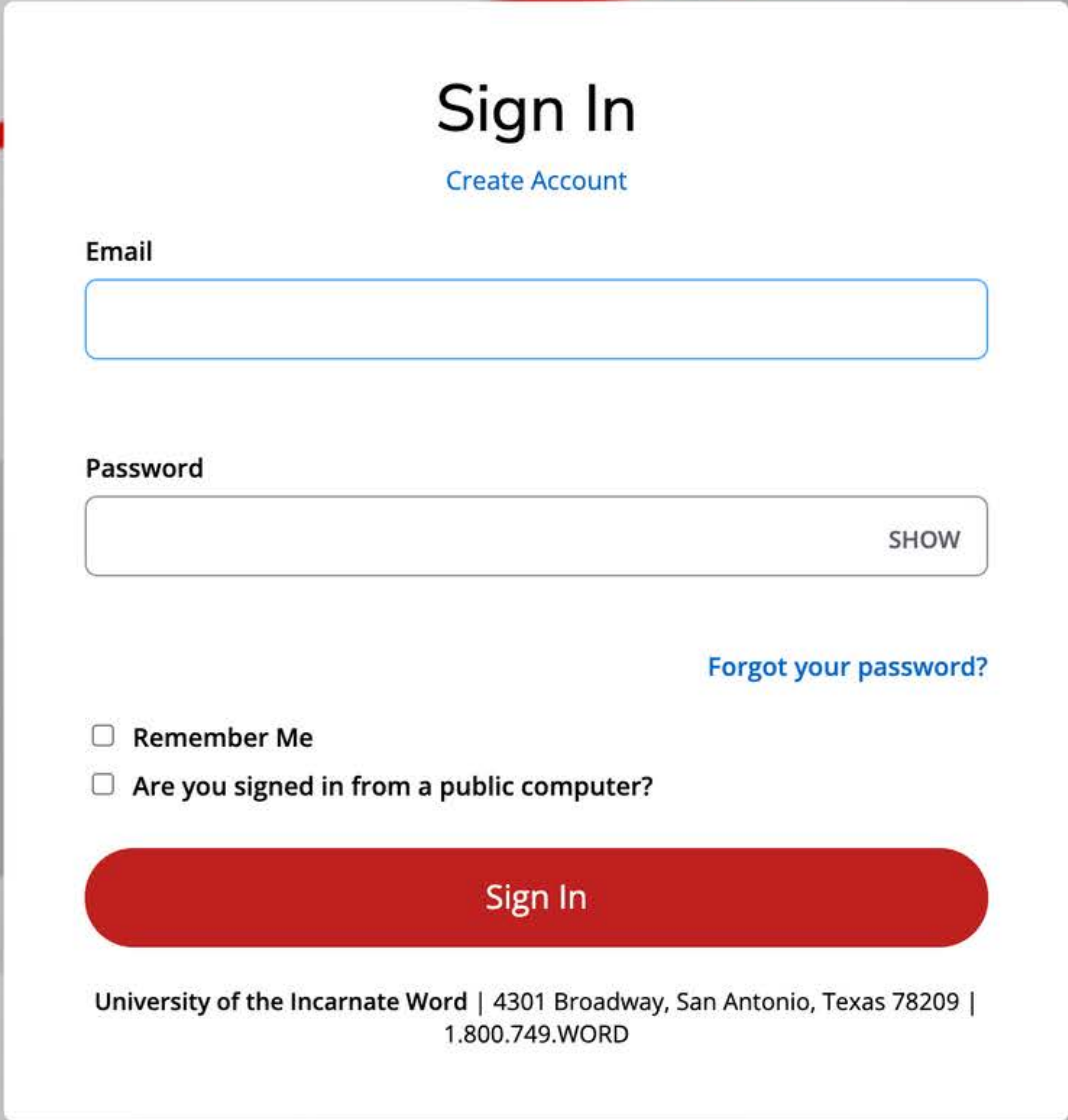
Step 1: Go to <https://sps.uiw.edu/admissions>



Step 2: Click on
"Apply Now"



Shortcut: Go directly to <https://uiw.elluciancrmrecruit.com/ApplyEAP/>



The image shows a 'Sign In' form centered on a grey background with red wavy lines. The form is white and contains the following elements: a title 'Sign In' with a blue link 'Create Account' below it; an 'Email' label above a text input field; a 'Password' label above a text input field with a 'SHOW' button on the right; a blue link 'Forgot your password?' to the right of the password field; two checkboxes: 'Remember Me' and 'Are you signed in from a public computer?'; a large red 'Sign In' button; and footer text: 'University of the Incarnate Word | 4301 Broadway, San Antonio, Texas 78209 | 1.800.749.WORD'.

**Create a GoUIW account, if you don't have one already,
or sign into your current account.**

School of Professional Studies

[Personal](#) [Academic Interest](#) [Demographics](#) [Academics](#) [Certification & Signature](#)

Please enter your information in each of the following sections. Fields with a red asterisk (*) are required and must be completed before you can submit your application. Additional questions may become required based on your answers to a previous question.

Name

Prefix

First Name *

Please use legal name.

Middle Name

Last Name *

Please use legal name.

Former Last Name

Suffix

Gender *

Birth Date *

(mm/dd/yyyy)

Shirt Size

Marital Status

Fill out application information.

On the applications, fill out the 'How do you plan to pay for your tuition?' under the 'Academic Interest' tab and select 'Corpus Christi Employee' or 'Corpus Christi Employee Dependent'.

Personal **Academic Interest** Demographics Academics Certification & Signature

Please enter your information in each of the following sections. Fields with a red asterisk (*) are required and must be completed before you can submit your application. Additional questions may become required based on your answers to a previous question.

Academic Plans

Anticipated Entry Term: * Part of Term: *

Preferred Learning Format * Intended Major *

Center: * **How do you plan to pay your tuition? ***
The UIW Online location should only be selected when the learning format is also Online. Please choose your primary payment method although you may utilize multiple sources.

Applying as a: * Graduate

[Previous Page](#) [Save Application](#) [Save & Continue](#)

How do you plan to pay your tuition? *

Please choose your primary payment method although you may utilize multiple sources.

- Corpus Christi Employee**
- Corpus Christi Employee Dependent
- DoD Civilian
- Ed Assist employer
- Employer Reimbursement
- Financial Aid
- Installations
- Military Dependent
- Pay in Full
- TA Tuition Assistance Air Force
- TA Tuition Assistance Army
- TA Tuition Assistance Coast Guard
- TA Tuition Assistance Marines
- TA Tuition Assistance Navy

Fill in Academic Interest information.
Select Corpus Christi Employee or Corpus Christi Employee Dependent.

Now that you have applied:

1. Submit Required Documents.

- **School of Professional Studies (Online Degrees):** sps.uiw.edu/admissions/index.html

2. Look for Your Acceptance Letter.

3. Complete and return the City of Corpus Christi Tuition Discount Program Form to eapapply@uiwtx.edu.

4. Attend Student Orientation.

5. Register For Classes.

6. Keep Going Strong to Graduation!

For any questions reach out to eapadmission@uiwtx.edu or (210) 757-0202.